

Marihart Thinner

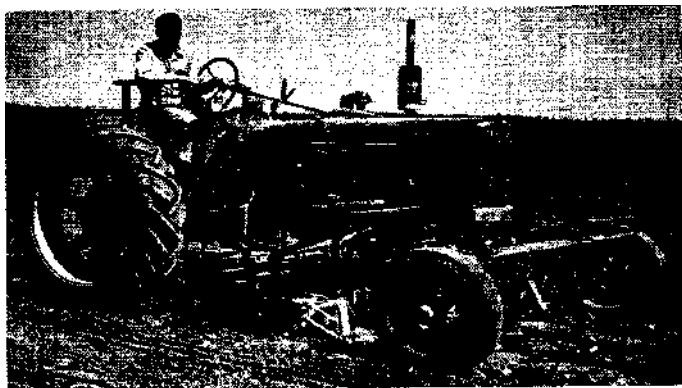


Figure 1.—Side view of Marihart thinner mounted on a conventional tractor. Set up for four-row operation.



Figure 2.—This view shows the "electric eye" which picks up the light reflection from a plant and relays an electrical impulse to a control box which governs the actual hoeing through a system of sprockets, clutches, electrical controls and spring-mounted cutters. The hoeing will take place on both sides of the plant to be left.

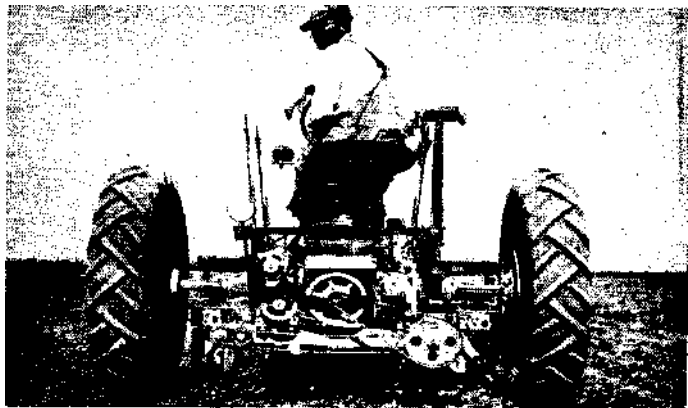


Figure 3.—This rear view of the Marihart thinner shows the drive system, generator and control boxes which activate the selective hoeing accomplished by this machine.